

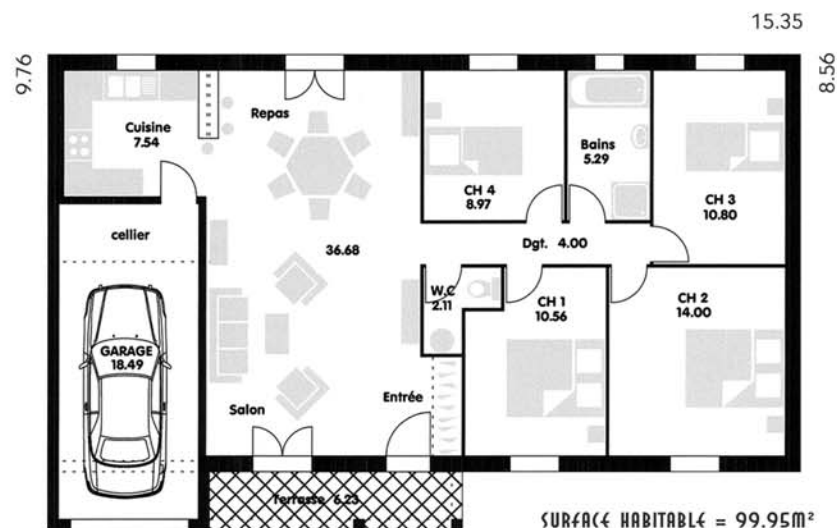
VIGNEMER



VIGNÈMÈR

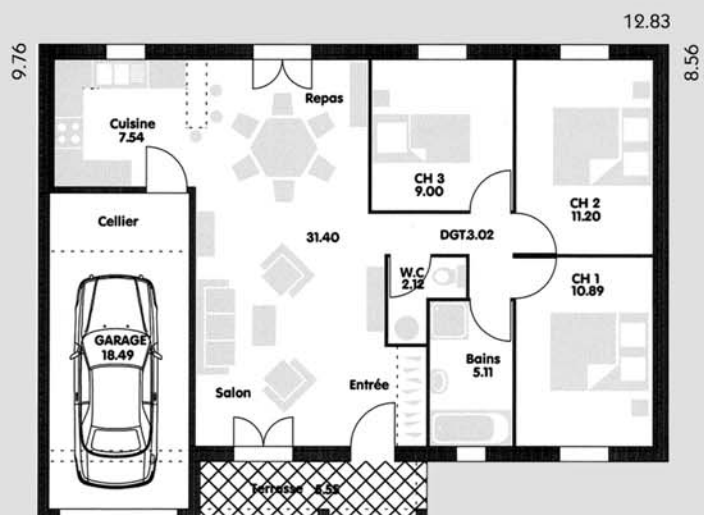
CE MODÈLE RÉGIONALISÉ OFFRE UNE TERRASSE COUVERTE, UN SÉJOUR TRAVERSANT ET UNE SURFACE DE DÉGAGEMENT RÉDUITE.

VIGNÈMÈR 100



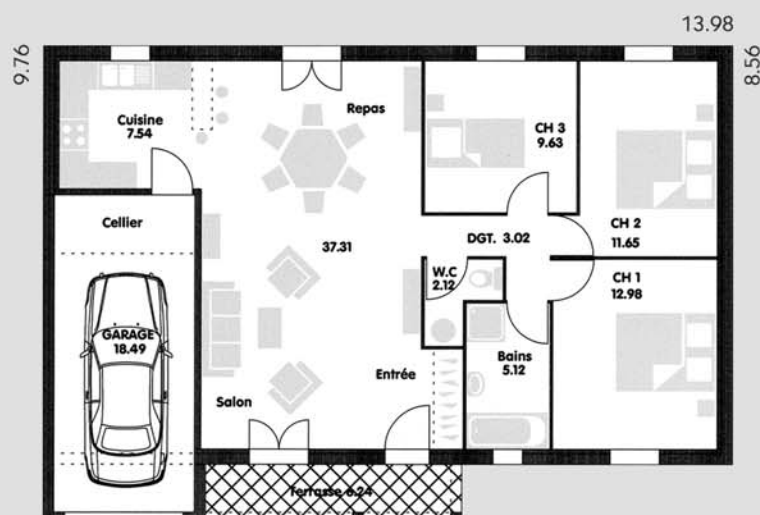
SURFACE HABITABLE = 99.95m²
SURFACES ANNEXES = 24.72m²
SURFACE UTILE = 124.67m²

VIGNÈMÈR 80

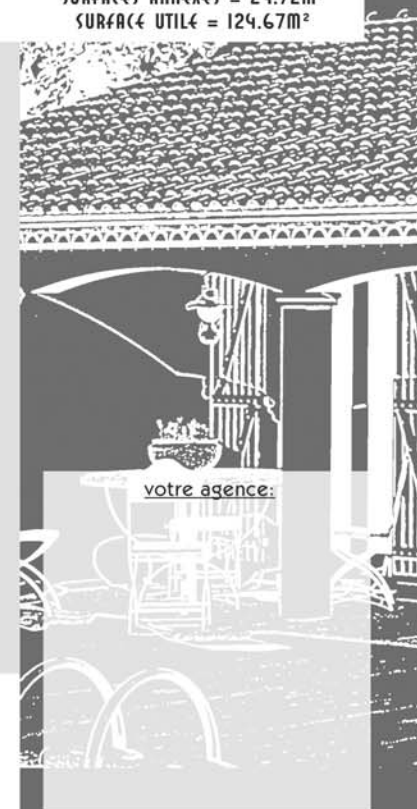


SURFACE HABITABLE = 80.28m²
SURFACES ANNEXES = 24.04m²
SURFACE UTILE = 104.32m²

VIGNÈMÈR 90



SURFACE HABITABLE = 89.37m²
SURFACES ANNEXES = 24.73m²
SURFACE UTILE = 114.10m²



vosre agence: